

BLOCKHAUS - BÜRO
 Dr.-Ing. Rainer Barth
 Nöthnitzer Str. 29, D-01187 Dresden

Fon + Fax 0351-471 94 30

Funk: 0173-981 81 76

Blockhaus.Barth@t-online.de

Umsatzsteuer-ID: DE203437801

Bankverbindung: Ostsächsische SK Dresden, Konto 412 305 37 48, BLZ 850 503 00



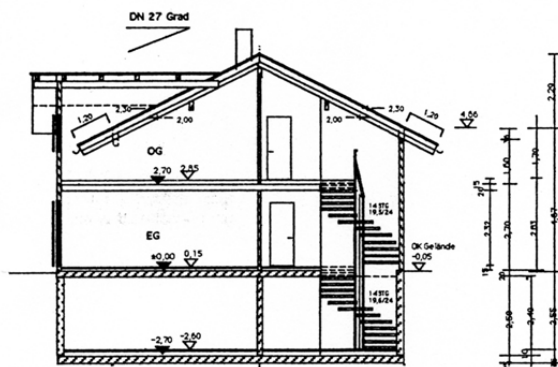
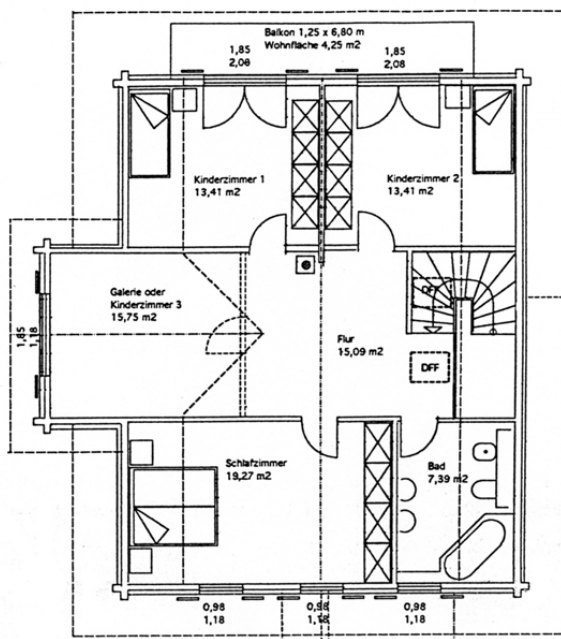
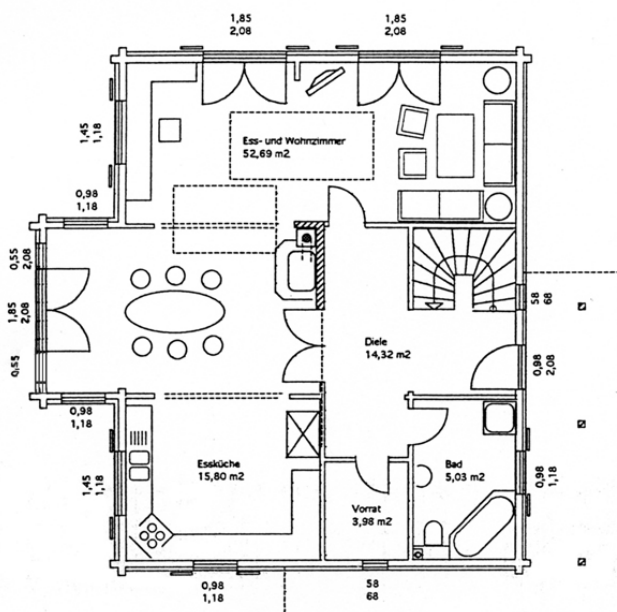
www.blockhaus-barth.de



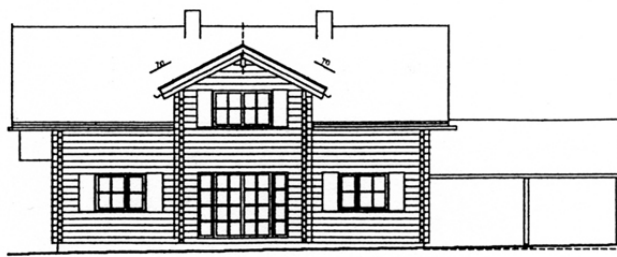
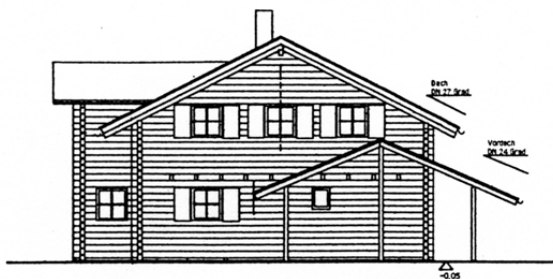
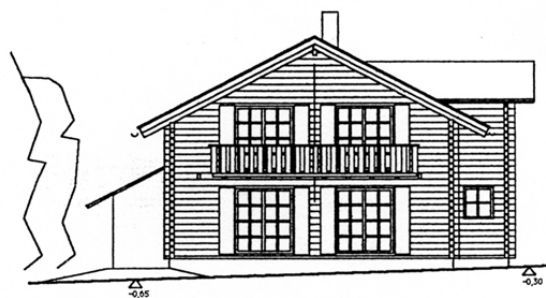
Holz ist genial.

Haus Weilheim

Grundfläche 107,2 m²
 (8,40 x 12,00 m plus Erker)



Querschnitt



Wohnflächen: EG ca. 91,00 m²

OG ca. 85,00 m²

Gesamtwohnfläche ca. 176,00 m²
 plus Balkon 8,50 m²